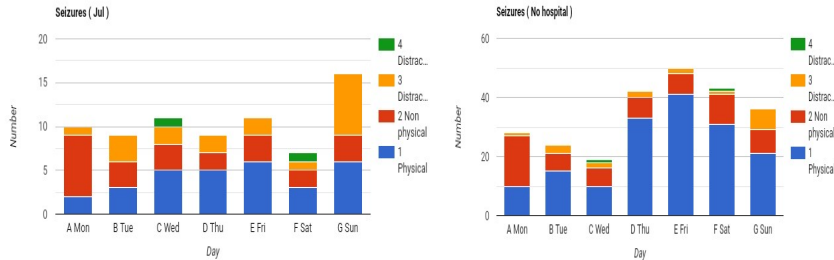


July Data

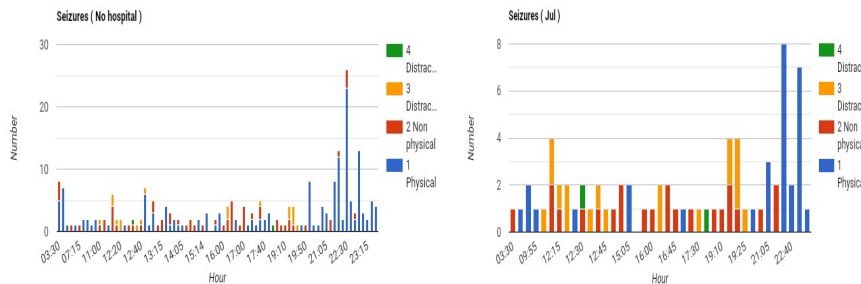
The following is my own data. I make no claims as the generality as to how this may relate to anyone else. It is provided on an ‘as is basis’.

Seizures by day in July and for all seizures



The above shows the clustering by day of the week. It is probably too early to suggest or infer a pattern as only three months of data has been collected.

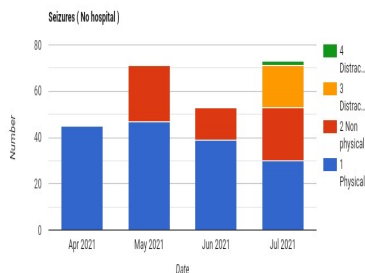
Seizure by hour



The left hand chart is all seizures by hour, the right hand chart is the clustering in July. There is a clustering of seizures when all seizures are considered.

- Between 1200 and 1400;
- Between 1600 and 1930;
- Between 2230 and 0000.

Seizure by month



This shows a downward trend in physical seizures consistent with ‘conversion’ of physical seizures to ‘distracted’ seizures.

